

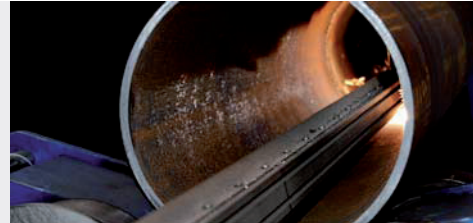
EIPA NEWS



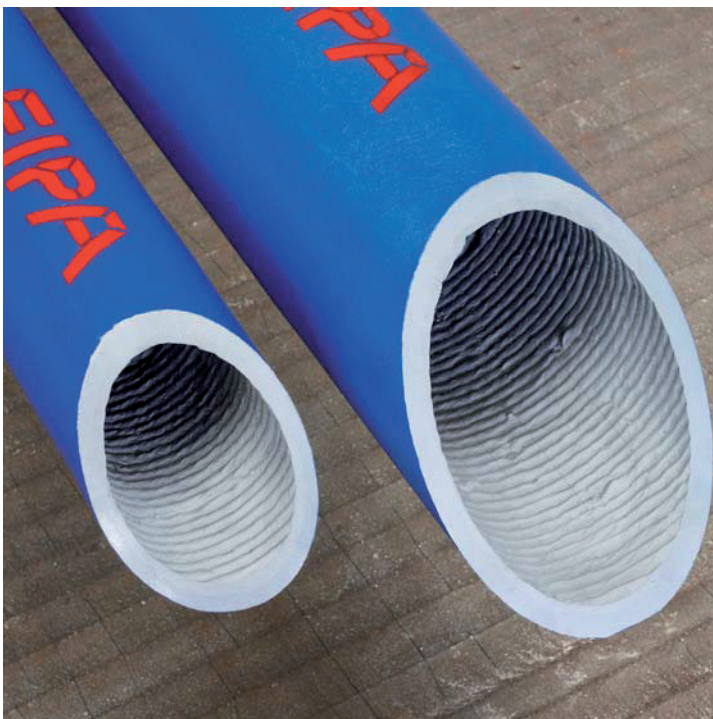
EIPA LongLife Pipe

EIPA
Eisen
Palmen
GmbH

Founded in 1900



High wear resistant tubes,
inside hard faced by the
EIPA Rotarc®-process, for
transport pipe lines which suffer
from wear through abrasion
in the following industry sectors:



- ◆ **Cement plants**
- ◆ **Metallurgical and steel plants**
- ◆ **Energy &
Waste incineration plants**
- ◆ **Foundries**
- ◆ **Mines**
- ◆ **Glass plants**
- ◆ **Quarries and sand pits**

EIPA NEWS



EIPA LongLife Pipe

EIPA
Eisen
Palmen
GmbH

Founded in 1900

Base - tube material:
P235GH
with hard facing inside.

EIPA LongLife Pipe
Standard length 3000-6000 mm
with clamping rim, not rounded

Nominal size, DN (mm)	Outside Ø (mm)	Wall thickness (mm) base pipe	Wall thickness (mm) hard facing	Standard length (mm) before welding
80	101,6	6,3	3,0	3000
100	114,3	6,3	3,0	3000
150	168,3	6,3	3,0	6000
200	219,1	6,3	3,0	6000
250	273,0	6,3	3,0	6000

**Other qualities and dimensions on request;
dependant on availability of the base pipe.**

The EIPA LongLife Pipe offers the following advantages:

- ◆ Long working life in extreme abrasive and erosive environments
- ◆ Uniform, seamless and smooth spiral hard facing
- ◆ Pipes as of **DN 80** from **3 up to 6 m** length
- ◆ Pipes as of **DN 450** up to **14 m** length
- ◆ Special dimensions and hard facing alloys adapted to your application are available upon customers request.